



The New York State School Report Card [2013 - 14]

NAME: MALONE MIDDLE SCHOOL

BEDS Code: 161501060015

ADDRESS: 15 FRANCIS ST, MALONE, NY 12953

PHONE: (518) 483-7801

The New York State Report Card is an important part of the Board of Regents' effort to raise learning standards for all students. It provides information to the public on school/district enrollment and staff, student performance, and other measures of school and district performance. Knowledge gained from the report card on a school's or district's strengths and weaknesses can be used to improve instruction and services to students.

MALONE MIDDLE SCHOOL Enrollment (2013 - 14)

K-12 Enrollment: 481

These enrollment data are collected as part of NYSED's Student Information Repository System (SIRS). These counts are as of "BEDS Day" which is typically the first Wednesday in October. Available are enrollment counts for public and charter school students by various demographics for the 2013 - 14 school year. For nonpublic school enrollment data please see the [Non-Public School Enrollment and Staff](#) information on our Information and Reporting Services webpage

Students by Gender

Male		Female	
255	53%	226	47%

Students by Ethnicity

American Indian or Alaska Native	Black or African American	Hispanic or Latino	Asian or Native Hawaiian/Other Pacific Islander	White	Multiracial
3	4	1	4	464	5
1%	1%	0%	1%	96%	1%

Other Groups

Limited English Proficient Students		Students with Disabilities		Economically Disadvantaged Students	
—	—	93	19%	257	53%

*Fields with dashes have data suppressed in order to prevent reporting personally identifiable information.

Students by Grade

1st Grade	6th Grade	7th Grade	8th Grade	Ungraded Secondary
1	139	180	160	1

Average Class Size (2013 - 14)

Grade 8 English	Grade 8 Mathematics	Grade 8 Science	Grade 8 Social Studies
18	18	14	16

Free and Reduced-Price Lunch (2013 - 14)

Eligible for Free Lunch		Eligible for Reduced-Price Lunch	
188	39%	58	12%

Attendance and Suspensions (2012 - 13)

Annual Attendance Rate	Student Suspensions	
96%	21	4%

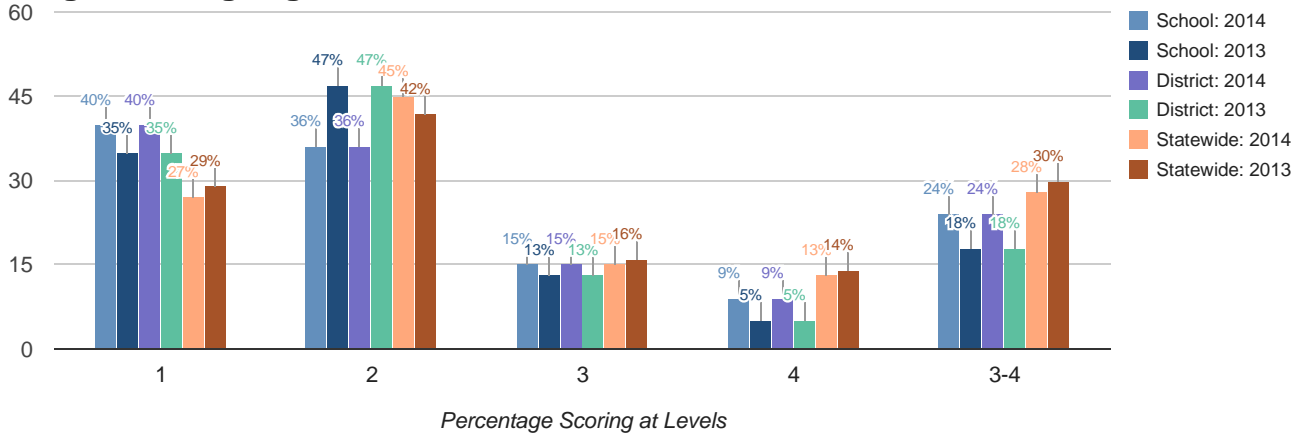
Teacher Turnover Rate (2012 - 13)

Turnover Rate of Teachers with Fewer Than Five Years of Experience	Turnover Rate of All Teachers
0%	2%

Teacher Qualifications (2011-12 through 2013-14)

	2011 - 12	2012 - 13	2013 - 14
Total Number of Teachers	46	47	47
Percent with No Valid Teaching Certificate	0%	0%	0%
Percent Teaching Out of Certification	0%	4%	0%
Percent with Fewer Than Three Years of Experience	0%	0%	0%
Percentage with Master's Degree Plus 30 Hours or Doctorate	28%	32%	32%
Total Number of Core Classes	144	151	149
Percent Not Taught by Highly Qualified Teachers in This School	0%	4%	0%
Percent Not Taught by Highly Qualified Teachers in This District	0%	1%	1%
Percent Not Taught by Highly Qualified Teachers Statewide	2%	3%	4%
Percent Not Taught by Highly Qualified Teachers in High-Poverty Schools Statewide	4%	6%	9%
Percent Not Taught by Highly Qualified Teachers in Low-Poverty Schools Statewide	1%	1%	1%
Total Number of Classes	229	232	224
Percent Taught by Teachers Without Appropriate Certification	5%	3%	1%

Grade 6 English Language Arts

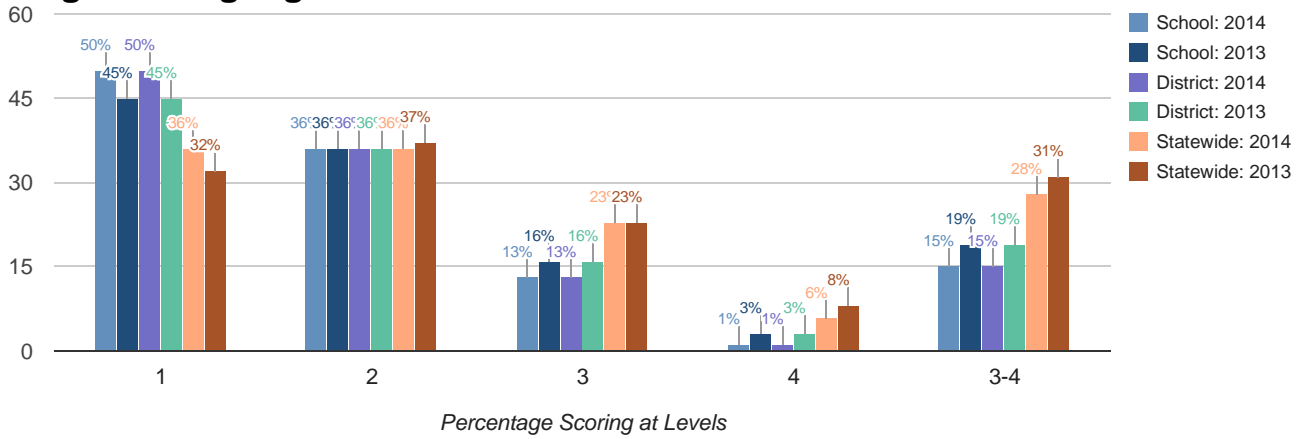


Mean Score

2014	2013
291	291

Results by Student Group	2014						2013					
	Total Tested	Percent Scoring at Level(s)				% Proficient (Levels 3 and 4)	Total Tested	Percent Scoring at Level(s)				% Proficient (Levels 3 and 4)
		1	2	3	4			1	2	3	4	
All Students	122	40	36	15	9	24	173	35	47	13	5	18
General Education	102	29	42	18	11	28	144	27	51	15	6	22
Students with Disabilities	20	95	5	0	0	0	29	76	24	0	0	0
Asian or Native Hawaiian/Other Pacific Islander	0	0	0	0	0	0	2	-	-	-	-	-
Black or African American	1	-	-	-	-	-	2	-	-	-	-	-
Hispanic or Latino	0	0	0	0	0	0	1	-	-	-	-	-
White	119	-	-	-	-	-	167	37	46	13	5	18
Multiracial	2	-	-	-	-	-	1	-	-	-	-	-
Small Group Total	122	40	36	15	9	24	6	0	83	17	0	17
Female	63	32	40	16	13	29	85	32	47	15	6	21
Male	59	49	32	14	5	19	88	39	47	10	5	15
English Proficient	122	40	36	15	9	24	173	35	47	13	5	18
Economically Disadvantaged	59	47	36	14	3	17	98	47	40	11	2	13
Not Economically Disadvantaged	63	33	37	16	14	30	75	20	56	15	9	24
Migrant	3	-	-	-	-	-	5	60	40	0	0	0
Not Migrant	119	-	-	-	-	-	168	35	47	13	5	18

Grade 7 English Language Arts

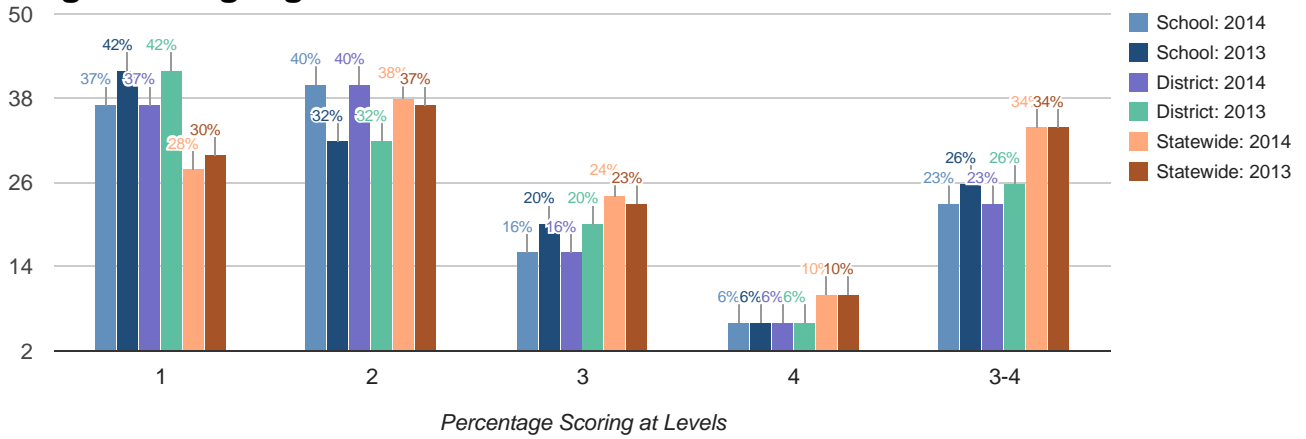


Mean Score

2014	2013
280	283

Results by Student Group	2014						2013					
	Total Tested	Percent Scoring at Level(s)				% Proficient (Levels 3 and 4)	Total Tested	Percent Scoring at Level(s)				% Proficient (Levels 3 and 4)
		1	2	3	4			1	2	3	4	
All Students	149	50	36	13	1	15	159	45	36	16	3	19
General Education	121	39	43	17	2	18	123	32	44	20	4	24
Students with Disabilities	28	96	4	0	0	0	36	92	8	0	0	0
American Indian or Alaska Native	0	0	0	0	0	0	3	-	-	-	-	-
Asian or Native Hawaiian/Other Pacific Islander	2	-	-	-	-	-	2	-	-	-	-	-
Black or African American	2	-	-	-	-	-	2	-	-	-	-	-
Hispanic or Latino	0	0	0	0	0	0	2	-	-	-	-	-
White	144	51	36	12	1	13	150	45	36	16	3	19
Multiracial	1	-	-	-	-	-	0	0	0	0	0	0
Small Group Total	5	20	20	60	0	60	9	56	33	11	0	11
Female	70	37	43	17	3	20	68	43	34	21	3	24
Male	79	61	29	10	0	10	91	47	37	12	3	15
English Proficient	148	-	-	-	-	-	159	45	36	16	3	19
Limited English Proficient	1	-	-	-	-	-	0	0	0	0	0	0
Economically Disadvantaged	82	57	28	13	1	15	93	59	28	11	2	13
Not Economically Disadvantaged	67	40	45	13	1	15	66	26	47	23	5	27
Migrant	5	80	20	0	0	0	5	60	40	0	0	0
Not Migrant	144	49	36	14	1	15	154	45	36	16	3	19

Grade 8 English Language Arts

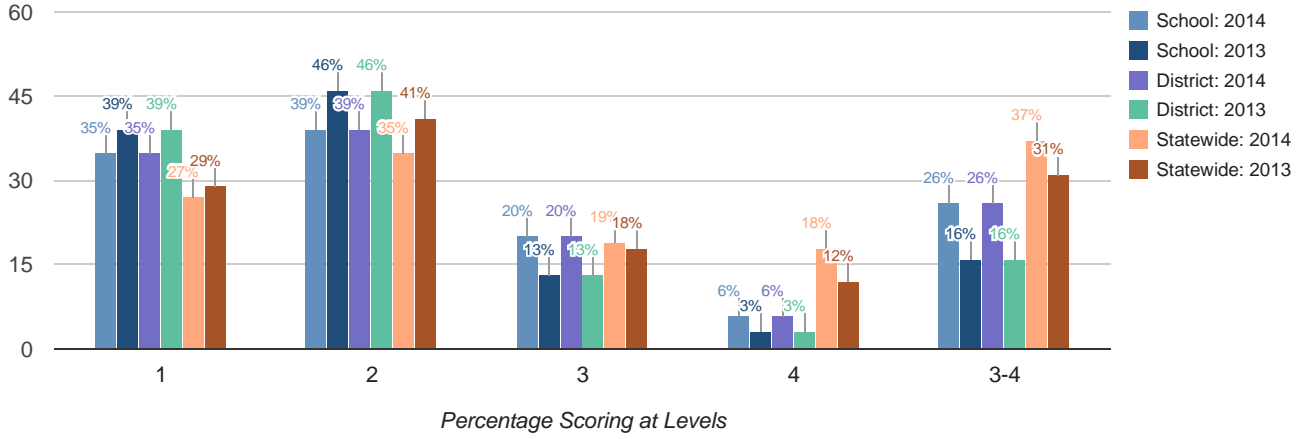


Mean Score

2014	2013
286	292

Results by Student Group	2014						2013					
	Total Tested	Percent Scoring at Level(s)				% Proficient (Levels 3 and 4)	Total Tested	Percent Scoring at Level(s)				% Proficient (Levels 3 and 4)
		1	2	3	4			1	2	3	4	
All Students	141	37	40	16	6	23	161	42	32	20	6	26
General Education	106	22	48	22	8	30	126	31	36	25	8	33
Students with Disabilities	35	83	17	0	0	0	35	83	17	0	0	0
American Indian or Alaska Native	3	-	-	-	-	-	2	-	-	-	-	-
Asian or Native Hawaiian/Other Pacific Islander	2	-	-	-	-	-	1	-	-	-	-	-
Black or African American	2	-	-	-	-	-	0	0	0	0	0	0
Hispanic or Latino	1	-	-	-	-	-	2	-	-	-	-	-
White	133	37	40	17	7	23	155	41	33	19	6	26
Multiracial	0	0	0	0	0	0	1	-	-	-	-	-
Small Group Total	8	38	50	13	0	13	6	67	0	33	0	33
Female	59	36	36	19	10	29	95	43	28	22	6	28
Male	82	38	44	15	4	18	66	41	36	17	6	23
English Proficient	141	37	40	16	6	23	161	42	32	20	6	26
Economically Disadvantaged	82	52	34	10	4	13	81	63	22	14	1	15
Not Economically Disadvantaged	59	15	49	25	10	36	80	21	41	26	11	38
Migrant	4	-	-	-	-	-	7	86	14	0	0	0
Not Migrant	137	-	-	-	-	-	154	40	32	21	6	27

Grade 6 Mathematics

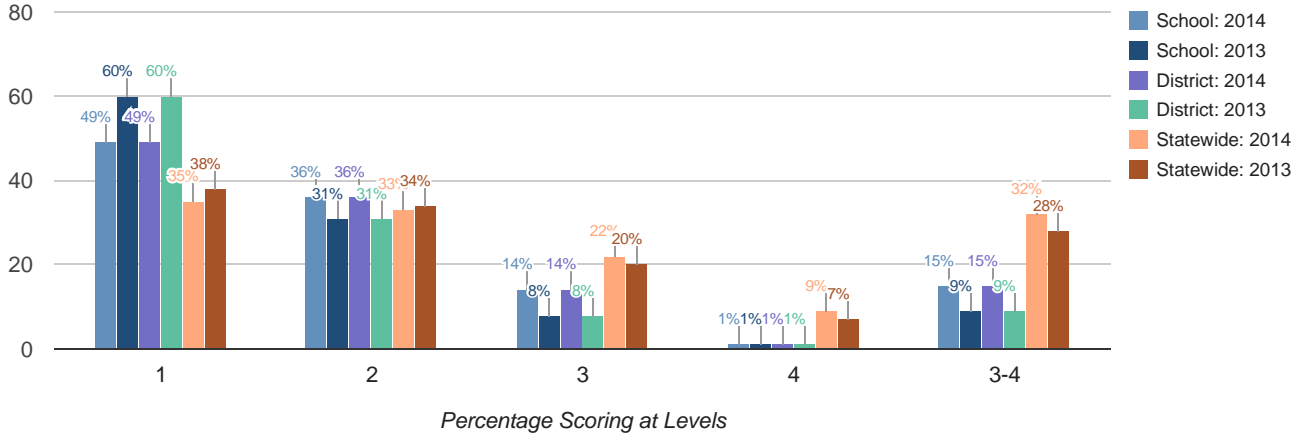


Mean Score

2014	2013
292	288

Results by Student Group	2014						2013					
	Total Tested	Percent Scoring at Level(s)				% Proficient (Levels 3 and 4)	Total Tested	Percent Scoring at Level(s)				% Proficient (Levels 3 and 4)
		1	2	3	4			1	2	3	4	
All Students	111	35	39	20	6	26	171	39	46	13	3	16
General Education	90	23	44	24	8	32	143	30	51	15	3	19
Students with Disabilities	21	86	14	0	0	0	28	82	18	0	0	0
Asian or Native Hawaiian/Other Pacific Islander	0	0	0	0	0	0	2	-	-	-	-	-
Black or African American	1	-	-	-	-	-	2	-	-	-	-	-
Hispanic or Latino	0	0	0	0	0	0	2	-	-	-	-	-
White	108	-	-	-	-	-	164	40	44	13	3	16
Multiracial	2	-	-	-	-	-	1	-	-	-	-	-
Small Group Total	111	35	39	20	6	26	7	0	86	14	0	14
Female	55	27	40	27	5	33	84	38	44	13	5	18
Male	56	43	38	13	7	20	87	39	47	13	1	14
English Proficient	111	35	39	20	6	26	170	-	-	-	-	-
Limited English Proficient	0	0	0	0	0	0	1	-	-	-	-	-
Economically Disadvantaged	53	43	38	13	6	19	98	45	42	11	2	13
Not Economically Disadvantaged	58	28	40	26	7	33	73	30	51	15	4	19
Migrant	3	-	-	-	-	-	5	60	40	0	0	0
Not Migrant	108	-	-	-	-	-	166	38	46	13	3	16

Grade 7 Mathematics

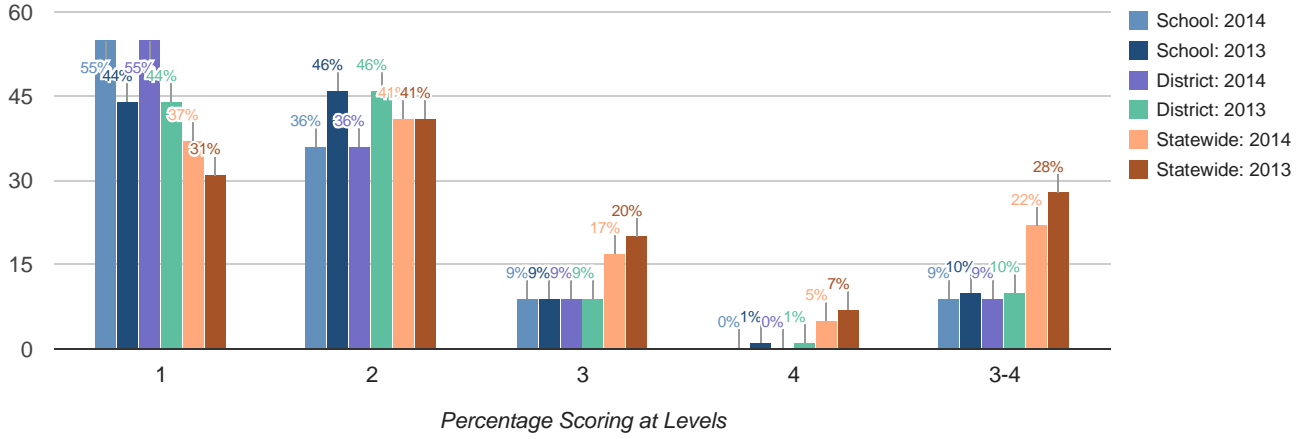


Mean Score

2014	2013
289	283

Results by Student Group	2014						2013					
	Total Tested	Percent Scoring at Level(s)				% Proficient (Levels 3 and 4)	Total Tested	Percent Scoring at Level(s)				% Proficient (Levels 3 and 4)
		1	2	3	4			1	2	3	4	
All Students	126	49	36	14	1	15	159	60	31	8	1	9
General Education	107	42	40	17	1	18	123	50	38	11	1	11
Students with Disabilities	19	89	11	0	0	0	36	94	6	0	0	0
American Indian or Alaska Native	0	0	0	0	0	0	3	-	-	-	-	-
Asian or Native Hawaiian/Other Pacific Islander	2	-	-	-	-	-	2	-	-	-	-	-
Black or African American	2	-	-	-	-	-	2	-	-	-	-	-
Hispanic or Latino	0	0	0	0	0	0	2	-	-	-	-	-
White	121	50	36	13	1	14	150	59	32	9	1	9
Multiracial	1	-	-	-	-	-	0	0	0	0	0	0
Small Group Total	5	40	20	40	0	40	9	89	11	0	0	0
Female	59	44	36	19	2	20	68	59	34	6	1	7
Male	67	54	36	10	0	10	91	62	29	10	0	10
English Proficient	125	-	-	-	-	-	159	60	31	8	1	9
Limited English Proficient	1	-	-	-	-	-	0	0	0	0	0	0
Economically Disadvantaged	66	64	24	11	2	12	93	69	24	8	0	8
Not Economically Disadvantaged	60	33	48	18	0	18	66	48	41	9	2	11
Migrant	4	-	-	-	-	-	5	80	20	0	0	0
Not Migrant	122	-	-	-	-	-	154	60	31	8	1	9

Grade 8 Mathematics



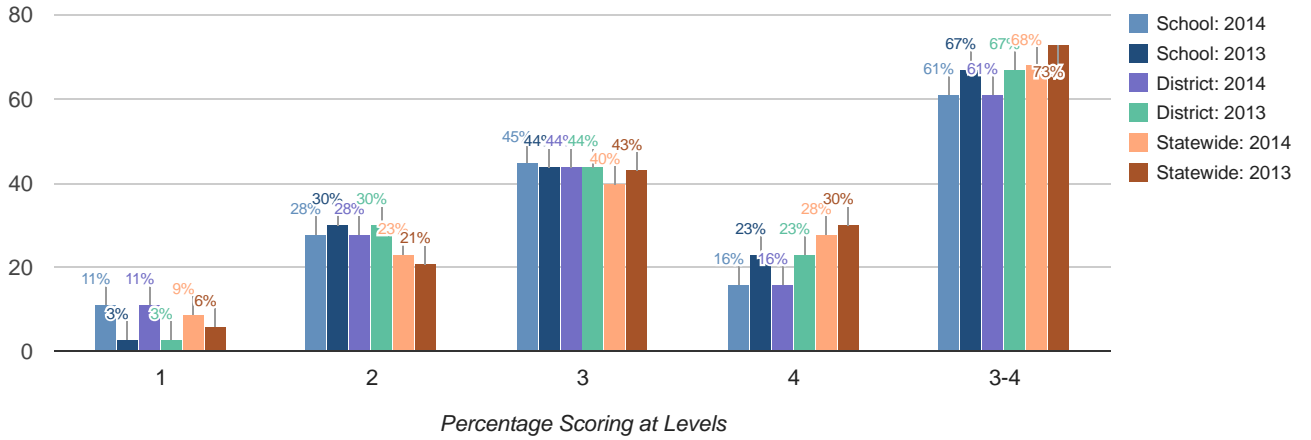
Mean Score

2014	2013
277	289

Results by Student Group	2014						2013					
	Total Tested	Percent Scoring at Level(s)				% Proficient (Levels 3 and 4)	Total Tested	Percent Scoring at Level(s)				% Proficient (Levels 3 and 4)
		1	2	3	4			1	2	3	4	
All Students	106	55	36	9	0	9	162	44	46	9	1	10
General Education	74	41	46	14	0	14	128	30	57	11	2	13
Students with Disabilities	32	88	13	0	0	0	34	97	3	0	0	0
American Indian or Alaska Native	3	-	-	-	-	-	2	-	-	-	-	-
Asian or Native Hawaiian/Other Pacific Islander	1	-	-	-	-	-	1	-	-	-	-	-
Black or African American	1	-	-	-	-	-	0	0	0	0	0	0
Hispanic or Latino	1	-	-	-	-	-	4	-	-	-	-	-
White	100	54	36	10	0	10	154	45	45	8	1	10
Multiracial	0	0	0	0	0	0	1	-	-	-	-	-
Small Group Total	6	67	33	0	0	0	8	38	50	13	0	13
Female	45	51	36	13	0	13	97	45	46	7	1	8
Male	61	57	36	7	0	7	65	43	45	11	2	12
English Proficient	106	55	36	9	0	9	160	-	-	-	-	-
Limited English Proficient	0	0	0	0	0	0	2	-	-	-	-	-
Economically Disadvantaged	66	62	29	9	0	9	82	60	37	4	0	4
Not Economically Disadvantaged	40	43	48	10	0	10	80	29	55	14	3	16
Migrant	4	-	-	-	-	-	7	86	14	0	0	0
Not Migrant	102	-	-	-	-	-	155	43	47	9	1	10

Grade 8 Science

Data in the bar charts include those for grade 8 students who took the New York State Grade 8 Science Test and grade 8 students who took a Regents science test in lieu of this test. Mean scores and data in the table for grade 8 science include only those for grade 8 students who took the New York State Grade 8 Science Test.



Mean Score

2014	2013
63	71

Results by Student Group	2014						2013					
	Total Tested	Percent Scoring at Level(s)				% Proficient (Levels 3 and 4)	Total Tested	Percent Scoring at Level(s)				% Proficient (Levels 3 and 4)
		1	2	3	4			1	2	3	4	
All Students	115	13	32	47	8	55	160	3	30	44	23	67
General Education	83	7	29	54	10	64	127	1	23	49	28	76
Students with Disabilities	32	28	41	28	3	31	33	12	58	27	3	30
American Indian or Alaska Native	3	–	–	–	–	–	2	–	–	–	–	–
Asian or Native Hawaiian/Other Pacific Islander	2	–	–	–	–	–	1	–	–	–	–	–
Black or African American	1	–	–	–	–	–	0	0	0	0	0	0
Hispanic or Latino	1	–	–	–	–	–	4	–	–	–	–	–
White	108	14	31	47	8	56	152	3	30	44	23	67
Multiracial	0	0	0	0	0	0	1	–	–	–	–	–
Small Group Total	7	0	57	43	0	43	8	0	38	50	13	63
Female	49	16	35	39	10	49	96	3	34	44	19	63
Male	66	11	30	53	6	59	64	3	23	45	28	73
English Proficient	115	13	32	47	8	55	158	–	–	–	–	–
Limited English Proficient	0	0	0	0	0	0	2	–	–	–	–	–
Economically Disadvantaged	68	18	38	41	3	44	80	3	43	40	15	55
Not Economically Disadvantaged	47	6	23	55	15	70	80	4	18	49	30	79
Migrant	4	–	–	–	–	–	7	0	57	43	0	43
Not Migrant	111	–	–	–	–	–	153	3	29	44	24	68

Grade 8 Students Taking a Regents Science Test

Accelerated grade 8 students who take a Regents science test in lieu of the New York State Grade 8 Science Test.

Results by Student Group	2014						2013					
	Total Tested	Percent Scoring at Level(s)				% Proficient (Levels 3 and 4)	Total Tested	Percent Scoring at Level(s)				% Proficient (Levels 3 and 4)
		1	2	3	4			1	2	3	4	
All Students	19	0	0	32	68	100	0	0	0	0	0	0

Regents Examination Results (2013 - 14)

Results by Student Group	Comprehensive English				Integrated Algebra			
	Total Tested	Percent of students scoring at or above			Total Tested	Percent of students scoring at or above		
		55	65	85		55	65	85
All Students	0	0	0	0	18	100	100	50
General Education	0	0	0	0	18	100	100	50
Black or African American	0	0	0	0	1	–	–	–
White	0	0	0	0	17	–	–	–
Small Group Total	0	0	0	0	18	100	100	50
Female	0	0	0	0	7	100	100	57
Male	0	0	0	0	11	100	100	45
English Proficient	0	0	0	0	18	100	100	50
Economically Disadvantaged	0	0	0	0	5	100	100	40
Not Economically Disadvantaged	0	0	0	0	13	100	100	54
Not Migrant	0	0	0	0	18	100	100	50

Regents Examination Results (2013 - 14)

Results by Student Group	English Language Arts (Common Core)					Algebra I (Common Core)						
	Total Tested	Percent of students scoring at					Total Tested	Percent of students scoring at				
		Level 1	Level 2	Level 3	Level 4	Level 5		Level 1	Level 2	Level 3	Level 4	Level 5
All Students	0	0	0	0	0	0	18	0	6	39	44	11
General Education	0	0	0	0	0	0	18	0	6	39	44	11
Black or African American	0	0	0	0	0	0	1	–	–	–	–	–
White	0	0	0	0	0	0	17	–	–	–	–	–
Small Group Total	0	0	0	0	0	0	18	0	6	39	44	11
Female	0	0	0	0	0	0	7	0	0	14	57	29
Male	0	0	0	0	0	0	11	0	9	55	36	0
English Proficient	0	0	0	0	0	0	18	0	6	39	44	11
Economically Disadvantaged	0	0	0	0	0	0	5	0	0	60	20	20
Not Economically Disadvantaged	0	0	0	0	0	0	13	0	8	31	54	8
Not Migrant	0	0	0	0	0	0	18	0	6	39	44	11

Regents Examination Results (2013 - 14)

Results by Student Group	Living Environment				Physical Setting/Earth Science			
	Total Tested	Percent of students scoring at or above			Total Tested	Percent of students scoring at or above		
		55	65	85		55	65	85
All Students	19	100	100	68	0	0	0	0
General Education	19	100	100	68	0	0	0	0
Black or African American	1	–	–	–	0	0	0	0
White	18	–	–	–	0	0	0	0
Small Group Total	19	100	100	68	0	0	0	0
Female	8	100	100	63	0	0	0	0
Male	11	100	100	73	0	0	0	0
English Proficient	19	100	100	68	0	0	0	0
Economically Disadvantaged	10	100	100	70	0	0	0	0
Not Economically Disadvantaged	9	100	100	67	0	0	0	0
Not Migrant	19	100	100	68	0	0	0	0

Elementary/Middle-Level English Language Arts Results for Accountability

All accountability groups made AYP: NO

Student Group	Made AYP	Tested 95%	Students Enrolled During the Test Administration Period	Percent of Enrolled Students with Valid Test Scores	PI >= EAMO or Safe Harbor Target	Tested Students Enrolled on BEDS Day	PI	EAMO	Safe Harbor Target
All Students	X	X	980*	93%*	X	403	79	84	84
American Indian or Alaska Native	—	—	3	—	—	3	—	—	—
Black or African American	—	—	5	—	—	4	—	—	—
Hispanic or Latino	—	—	1	—	—	1	—	—	—
Asian or Native Hawaiian/Other Pacific Islander	—	—	4	—	—	4	—	—	—
White	X	X	938*	93%*	X	388	79	103	97
Multiracial	—	—	5	—	—	3	—	—	—
Students With Disabilities	X	✓	195*	95%*	X	79†	13†	37	37
Limited English Proficient	—	—	1	—	—	1	—	—	—
Economically Disadvantaged	X	X	532*	94%*	X	217	63	67	67

Results for the following groups are NOT used to determine AYP.

Student Group	Students Enrolled During the Test Administration Period	Percent of Enrolled Students with Valid Test Scores	Tested Students Enrolled on BEDS Day	PI
Not American Indian or Alaska Native	972*	93%*	400	80
Not Black or African American	971*	93%*	399	79
Not Hispanic or Latino	971*	93%*	402	79
Not Asian or Native Hawaiian/Other Pacific Islander	971*	93%*	399	79
Not White	18	—	15	—
Not Multiracial	973*	93%*	400	79
General Education	785*	92%*	324	96
English Proficient	976*	93%*	402	80
Not Economically Disadvantaged	448*	92%*	186	99
Male	506*	92%*	213	68
Female	474*	94%*	190	93
Migrant	14	—	11	—
Not Migrant	949*	93%*	392	80

✓ Yes

X No

— There were fewer than 40 students enrolled during the test administration period, so the Percent of Enrolled Students with Valid Test Scores data are suppressed OR there were fewer than 30 tested students enrolled on BEDS day and during the test administration period, so the PI, EAMO, and Safe Harbor Target data are suppressed.

*The percentage of students tested in the current year fell below 95 percent, so the numbers of enrolled and tested students in the current year and previous year were combined to provide the school/district with another opportunity to meet the participation rate criterion.

† Includes former students with disabilities because the number of students with disabilities in the current year is equal to or greater than 30.

Elementary/Middle-Level Mathematics Results for Accountability

All accountability groups made AYP: NO

Student Group	Made AYP	Tested 95%	Students Enrolled During the Test Administration Period	Percent of Enrolled Students with Valid Test Scores	PI >= EAMO or Safe Harbor Target	Tested Students Enrolled on BEDS Day	PI	EAMO	Safe Harbor Target
All Students	X	X	978*	87%*	X	349	79	80	80
American Indian or Alaska Native	—	—	3	—	—	3	—	—	—
Black or African American	—	—	5	—	—	4	—	—	—
Hispanic or Latino	—	—	1	—	—	1	—	—	—
Asian or Native Hawaiian/Other Pacific Islander	—	—	4	—	—	3	—	—	—
White	X	X	936*	87%*	X	335	79	99	80
Multiracial	—	—	5	—	—	3	—	—	—
Students With Disabilities	X	X	196*	88%*	X	66†	15†	37	30
Limited English Proficient	—	—	1	—	—	1	—	—	—
Economically Disadvantaged	X	X	533*	87%*	X	181	61	64	64

Results for the following groups are NOT used to determine AYP.

Student Group	Students Enrolled During the Test Administration Period	Percent of Enrolled Students with Valid Test Scores	Tested Students Enrolled on BEDS Day	PI
Not American Indian or Alaska Native	970*	87%*	346	79
Not Black or African American	969*	87%*	345	78
Not Hispanic or Latino	969*	87%*	348	79
Not Asian or Native Hawaiian/Other Pacific Islander	969*	87%*	346	79
Not White	18	—	14	—
Not Multiracial	971*	88%*	346	78
General Education	782*	87%*	283	93
English Proficient	974*	87%*	348	79
Not Economically Disadvantaged	445*	88%*	168	98
Male	503*	87%*	186	70
Female	475*	88%*	163	88
Migrant	15	—	9	—
Not Migrant	946*	87%*	340	79

✓ Yes

X No

— There were fewer than 40 students enrolled during the test administration period, so the Percent of Enrolled Students with Valid Test Scores data are suppressed OR there were fewer than 30 tested students enrolled on BEDS day and during the test administration period, so the PI, EAMO, and Safe Harbor Target data are suppressed.

*The percentage of students tested in the current year fell below 95 percent, so the numbers of enrolled and tested students in the current year and previous year were combined to provide the school/district with another opportunity to meet the participation rate criterion.

† Includes former students with disabilities because the number of students with disabilities in the current year is equal to or greater than 30.

Elementary/Middle-Level Science Results for Accountability

All accountability groups made AYP: NO

Student Group	Made AYP	Tested 80%	Students Enrolled During the Test Administration Period	Percent of Enrolled Students with Valid Test Scores	PI >= EAMO or Progress Target	Tested Students Enrolled on BEDS Day	PI	EAMO	Progress Target
All Students	X	✓	155	87%	X	133	150	174	167
American Indian or Alaska Native	—	—	3	—	—	3	—	—	—
Black or African American	—	—	2	—	—	2	—	—	—
Hispanic or Latino	—	—	1	—	—	1	—	—	—
Asian or Native Hawaiian/Other Pacific Islander	—	—	2	—	—	2	—	—	—
White	X	✓	147	86%	X	125	150	183	167
Multiracial	—	—	0	—	—	0	—	—	—
Students With Disabilities	X	—	37	—	X	32†	106+	145	121
Limited English Proficient	—	—	0	—	—	0	—	—	—
Economically Disadvantaged	X	✓	88	90%	X	78	137	163	157

Results for the following groups are NOT used to determine AYP.

Student Group	Students Enrolled During the Test Administration Period	Percent of Enrolled Students with Valid Test Scores	Tested Students Enrolled on BEDS Day	PI
Not American Indian or Alaska Native	152	87%	130	152
Not Black or African American	153	87%	131	150
Not Hispanic or Latino	154	87%	132	151
Not Asian or Native Hawaiian/Other Pacific Islander	153	87%	131	150
Not White	8	—	8	—
Not Multiracial	155	87%	133	150
General Education	118	86%	101	164
English Proficient	155	87%	133	150
Not Economically Disadvantaged	67	84%	55	169
Male	88	88%	75	156
Female	67	87%	58	143
Migrant	5	—	3	—
Not Migrant	150	87%	130	151

✓ Yes

X No

— There were fewer than 40 students enrolled during the test administration period, so the Percent of Enrolled Students with Valid Test Scores data are suppressed OR there were fewer than 30 tested students enrolled on BEDS day and during the test administration period, so the PI, EAMO, and Progress Target data are suppressed.

† Includes former students with disabilities because the number of students with disabilities in the current year is equal to or greater than 30.